

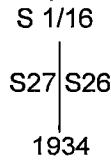
State of Wyoming Corner Record

(In compliance with the **CORNER PERPETUATION AND FILING ACT**, Wyoming Statutes, 1997 Section 33-29-140 et. seq., and the Rules and Regulations of the Board of Professional Engineers and Professional Land Surveyors)

Record of original survey and citation of source of historical information (if corner is lost or obliterated). Description of corner monumentation evidence found and/or monument and accessories established to perpetuate the location of this corner. Sketch of relative location of monument, accessories, and reference points with course and distance to adjacent corner(s) (if determined in this survey).

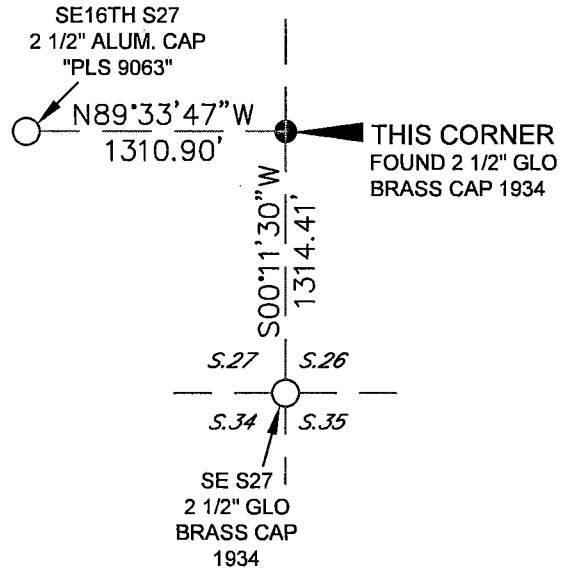
Original Record: None.

Susequent Record: (T14N, R70W, 6th PM - Dependant Resurvey with Subdivision of Certain Sections, Leo M. Peterson and Willis L. Brown, 1934) Set an iron post, 3ft. long, 1 in. diam., 12 ins. in the ground to bedrock, and in a mound of stone to top, for the south 1/16 sec. cor. of secs. 26 27, with brass cap mkd.

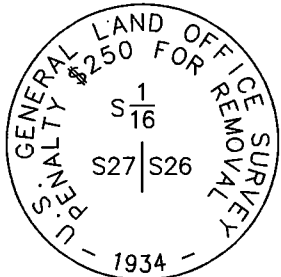


Evidence Found: Found 2 1/2" brass cap marked as shown below with a metal T-post set alongside. Cap projects 20" above the ground, is in a 4' diameter mound of stone, and is about 150' South of centerline of County Road 210.

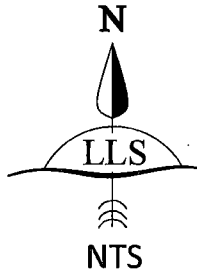
Perpetuation: Accepted cap as corner location, no further monumentation.



Monument Inscription



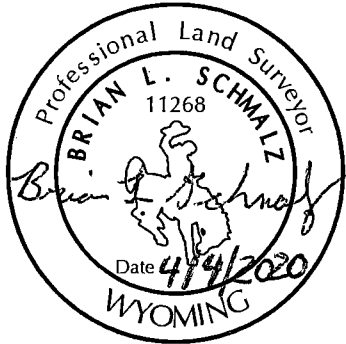
2 1/2 INCH DIAMETER
BRASS CAP



Date of Field Work: 4-2-2020 Office Reference: 20-013

Cross Index Plat

| | | | | | | | | | | | | | | | | | | | | | | | | | | |
|---|---|---|----|---|----|---|----|---|----|----|----|----|----|----|----|----|----|----|----|----|----|----|----|----|----|---|
| 1 | 2 | 3 | 4 | 5 | 6 | 7 | 8 | 9 | 10 | 11 | 12 | 13 | 14 | 15 | 16 | 17 | 18 | 19 | 20 | 21 | 22 | 23 | 24 | 25 | | |
| A | | | | | | | | | | | | | | | | | | | | | | | | | A | |
| B | | | | | | | | | | | | | | | | | | | | | | | | | B | |
| C | | 6 | | 5 | | 4 | | 3 | | 2 | | 1 | | | | | | | | | | | | | C | |
| D | | | | | | | | | | | | | | | | | | | | | | | | | | D |
| E | | | | | | | | | | | | | | | | | | | | | | | | | | E |
| F | | | | | | | | | | | | | | | | | | | | | | | | | | F |
| G | | | 7 | | 8 | | 9 | | 10 | | 11 | | 12 | | | | | | | | | | | | | G |
| H | | | | | | | | | | | | | | | | | | | | | | | | | | H |
| J | | | | | | | | | | | | | | | | | | | | | | | | | | J |
| K | | | | | | | | | | | | | | | | | | | | | | | | | | K |
| L | | | 18 | | 17 | | 16 | | 15 | | 14 | | 13 | | | | | | | | | | | | | L |
| M | | | | | | | | | | | | | | | | | | | | | | | | | | M |
| N | | | | | | | | | | | | | | | | | | | | | | | | | | N |
| O | | | | | | | | | | | | | | | | | | | | | | | | | | O |
| P | | | 19 | | 20 | | 21 | | 22 | | 23 | | 24 | | | | | | | | | | | | | P |
| Q | | | | | | | | | | | | | | | | | | | | | | | | | | Q |
| R | | | | | | | | | | | | | | | | | | | | | | | | | | R |
| S | | | | | | | | | | | | | | | | | | | | | | | | | | S |
| T | | | 30 | | 29 | | 28 | | 27 | | 26 | | 25 | | | | | | | | | | | | | T |
| U | | | | | | | | | | | | | | | | | | | | | | | | | | U |
| V | | | | | | | | | | | | | | | | | | | | | | | | | | V |
| W | | | | | | | | | | | | | | | | | | | | | | | | | | W |
| X | | | 31 | | 32 | | 33 | | 34 | | 35 | | 36 | | | | | | | | | | | | | X |
| Y | | | | | | | | | | | | | | | | | | | | | | | | | | Y |
| Z | | | | | | | | | | | | | | | | | | | | | | | | | | Z |
| | 1 | 2 | 3 | 4 | 5 | 6 | 7 | 8 | 9 | 10 | 11 | 12 | 13 | 14 | 15 | 16 | 17 | 18 | 19 | 20 | 21 | 22 | 23 | 24 | 25 | |



BRIAN L. SCHMALZ
PLS 11268

This corner record was prepared by me or under my direction and supervision.



(307) 460-0801
LARAMIE, WY

(720) 263-0289
BRIGHTON, CO



RECP #: 783067
RECORDED 7/16/2020 AT 11:43 AM BK# 2684 PG# 171
Debra K. Lee, CLERK OF LARAMIE COUNTY, WY PAGE 1 OF 1